



Morgans

PROPERTY

4 Hillview Court, Halbeath, KY12 0WP

Offers In The Region £365,000

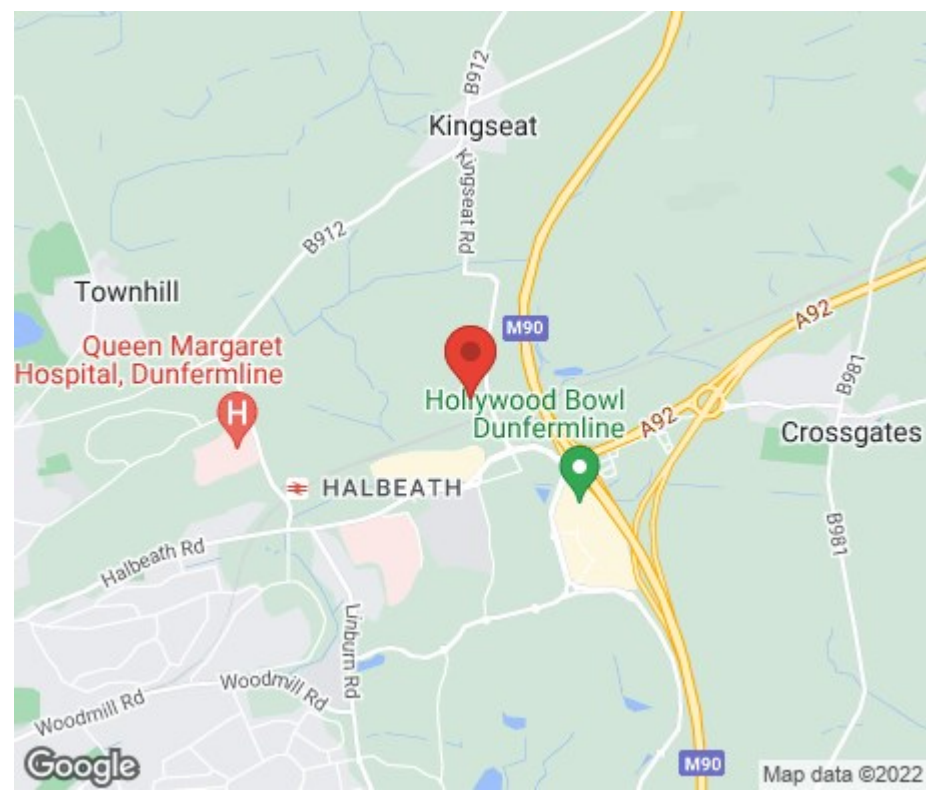






We are delighted to be marketing this well appointed and substantial executive villa located within an exclusive development of quality homes built by Bryant Homes, situated in a quiet cul-de-sac within one of Dunfermline's most sought after estates. The property is lovely throughout and well presented providing generous family sized accommodation with private gardens and excellent outdoor space which is not overlooked. The subjects briefly comprise reception hallway, w.c/storage, lounge, dining room, study/office, breakfasting kitchen and utility room. Feature staircase and gallery landing leads to master bedroom with en-suite, guest bedroom with further en-suite, two further bedrooms and family bathroom. Double driveway and semi detached double garage provides ample parking. The property is double glazed with wet electric heating and the benefit of solar panels.





EXTRAS INC. IN SALE /AGENTS NOTE

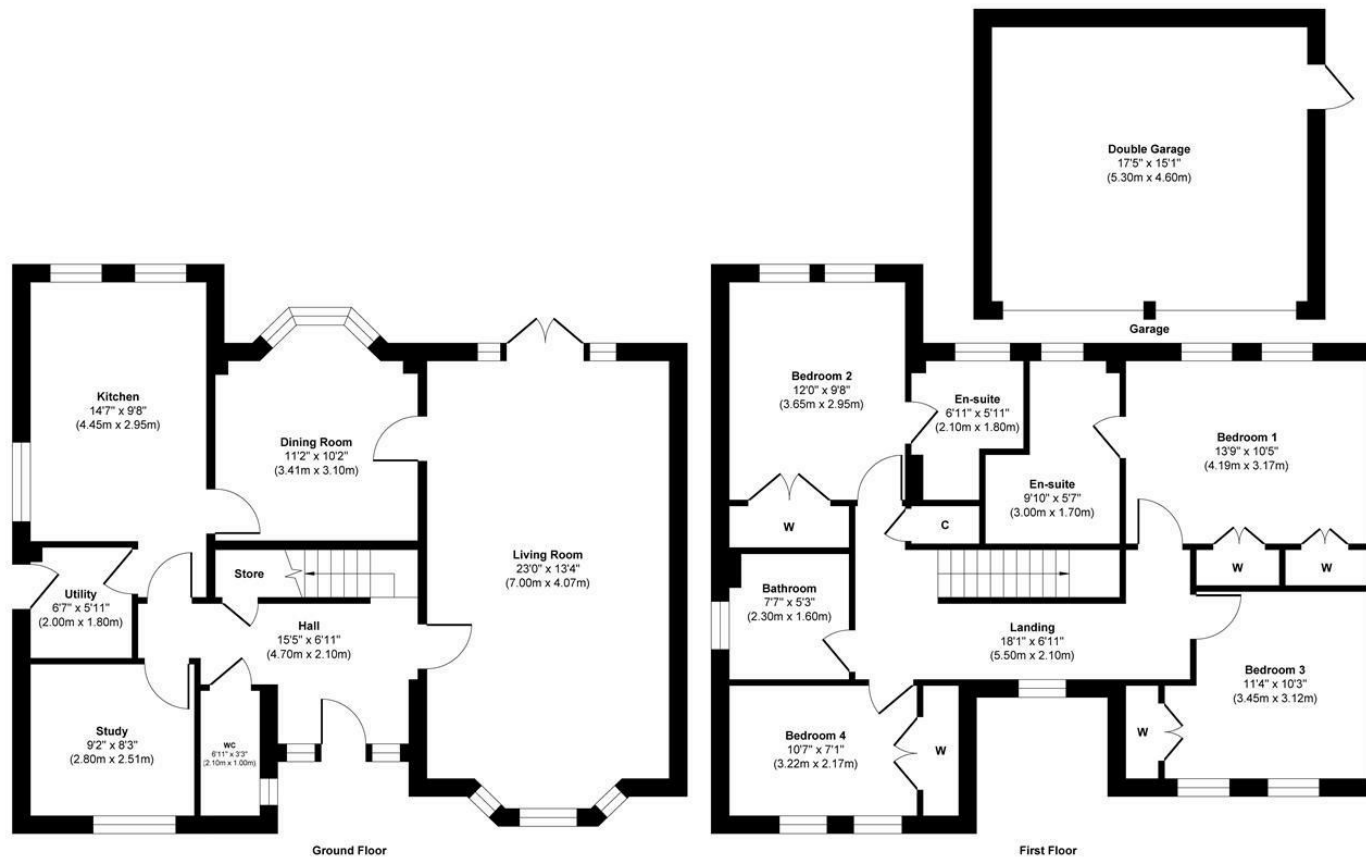
All floor coverings, blinds, bathroom and light fittings together with integrated appliances, summerhouse and greenhouse.

From 1st February 2022, residential properties in Scotland are required by law to have installed a system of inter-linked smoke alarms, carbon monoxide detectors and heat detectors (the "inter-linked system"). No warranty is given that any interlinked system has been installed in this property and interested parties should make their own enquiries. The owner will not warrant the working order of the fixtures and fittings or appliances which are included in the sale price or white goods.









This floor plan is for illustrative and marketing purposes only and is to be used as a guide only. No details are guaranteed on measurements, floor areas, or orientation and do not form any agreement. No liability is taken for error, omission or misstatement. A party must rely upon its own inspection(s). Created by 9AM Media



SOLICITORS | PROPERTY

33 East Port, Dunfermline, Fife, KY12 7JE

Tel: 01383 620222 Fax: 01383 621213

www.morganlaw.co.uk



espc

rightmove

Zoopla.co.uk

onTheMarket.com

s1homes.com

naea | propertymark

PROTECTED

AGENTS NOTE These particulars do not form part of any contract and the statements or plans contained herein are not warranted nor to scale. Approximate measurements have been taken by electronic device at the widest point. Services and appliances have not been tested for efficiency or safety and no warranty is given as to their compliance with any Regulations. No movable items will be included in the sale.